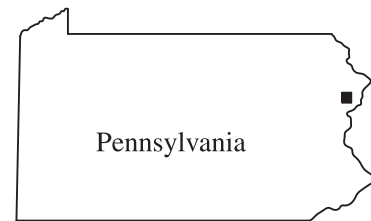




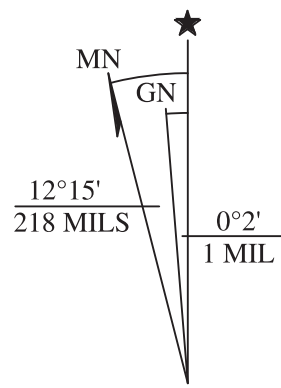
**TRAIL MAP**

**Resica Falls Scout Reservation**  
Cradle of Liberty Council • Boy Scouts of America  
1200 Resica Falls Road • East Stroudsburg, PA 18302

Map produced by: Paul Jones and Troop 394, Frontier District  
Revised - 6/2016



Map Location



UTM grid & 1993 magnetic north declination at center of sheet

### Key for Buildings/Improvements

- |                                 |                                     |
|---------------------------------|-------------------------------------|
| 1.- Action Archery              | 24.- Nunnyvilles                    |
| 2.- Activity Field              | 25.- Maintenance Shop               |
| 3.- Archery Range               | 26.- Maintenance Annex              |
| 4.- Aquatics (pool & showers)   | 27.- O. A. Ceremonial Grounds       |
| 5.- Bear Lodge (Health Lodge)   | 28.- Parade Field                   |
| 6.- Blacksmith Shop             | 29.- Picnic Area                    |
| 7.- Boat House                  | 30.- Assistant Ranger               |
| 8.- Brooks Lodge                | 31.- Ranger Residence (White House) |
| 9.- Bushkill Lodge              | 32.- Rifle/Shotgun Range            |
| 10.- Campfire Circle            | 33.- Scoutcraft                     |
| 11.- Camp Director              | 34.- Sports                         |
| 12.- Cellular Tower             | 35.- Staff Area (Big Springs)       |
| 13.- Chapel                     | 36.- Staff Area (Firestone)         |
| 14.- C.O.P.E.                   | 37.- Trading Post                   |
| 15.- Cox Lodge                  | 38.- Trooper Lodge                  |
| 16.- Dan Beard                  | 39.- Unami Lodge (Camp Office & QM) |
| 17.- Dining Hall                | 40.- Well                           |
| 18.- Ecology                    | 41.- Ranjo Clock Tower              |
| 19.- Family Cabins              | 42.- Basketball Court               |
| 20.- Richards' Arena            | 43.- Great Bend Showerhouse         |
| 21.- Firestone Lodge            | 44.- Great Bend STEM Center         |
| 22.- Fisherman's Parking        | 45.- ATV Training Course            |
| 23.- Eibner Handicraft Pavilion |                                     |

### Key for Big Springs Campsites

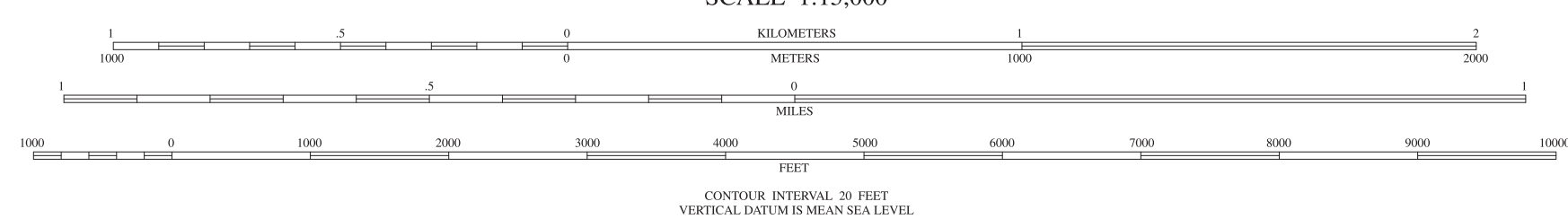
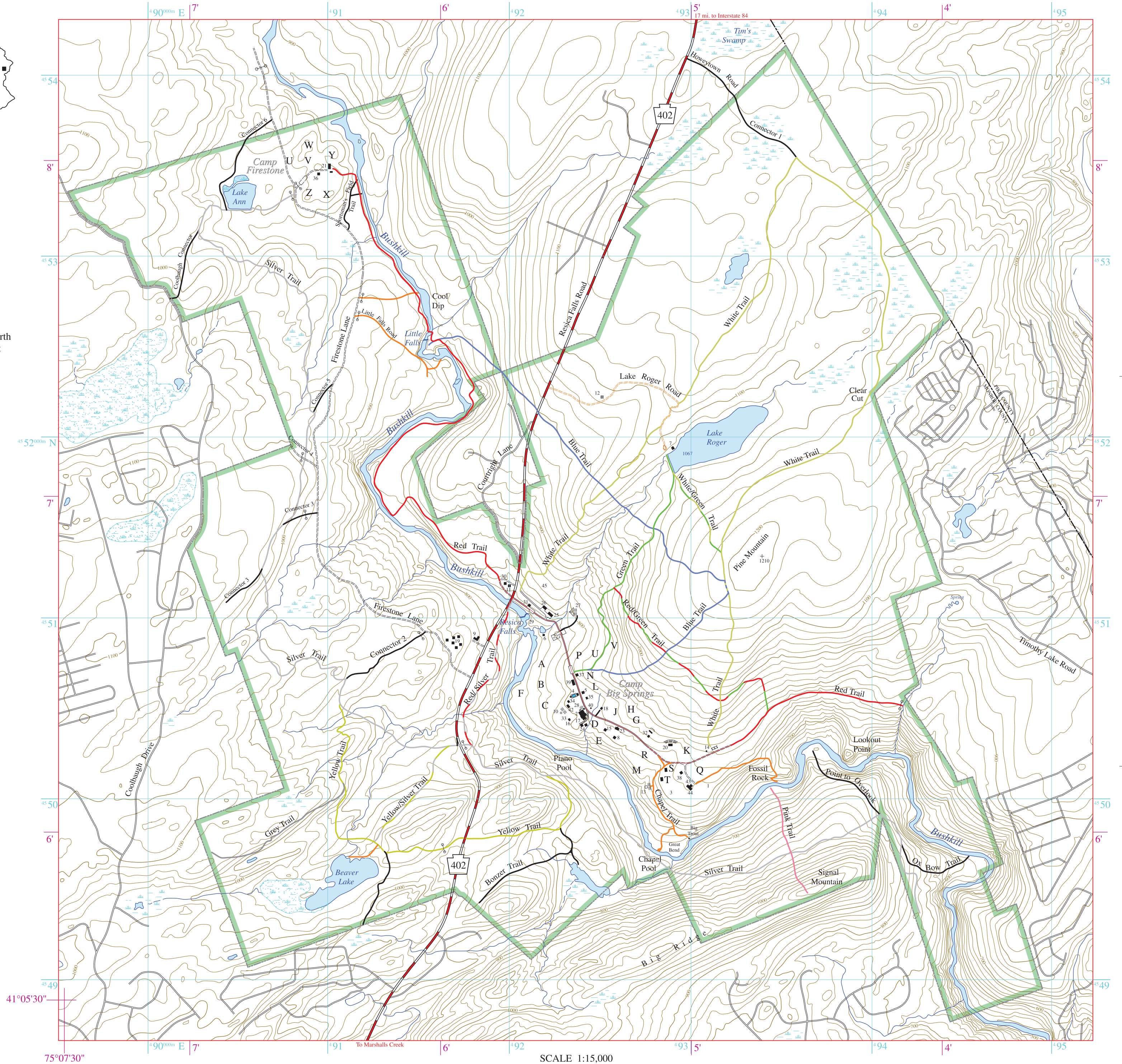
- |                   |                 |                  |
|-------------------|-----------------|------------------|
| A - Cayuga        | H - Mohawk      | Q - Twin Hill    |
| B - Cherokee      | J - Navajo      | R - Two Feathers |
| C - Cheyenne      | K - North Wind  | S - Bear Paw     |
| D - Chinook       | L - Pueblo      | T - Deer Run     |
| E - Chippewa      | M - Running Fox | U - Seneca       |
| F - Comanche      | N - Shenandoah  | V - Shawnee      |
| G - Little Mohawk | P - Shoshone    |                  |

### Key for Firestone Campsites

- |                 |                  |                     |
|-----------------|------------------|---------------------|
| U - Bear Hollow | W - Falcon Crest | Y - Porcupine Ridge |
| V - Eagle Crest | X - Hill Side    | Z - Ruffed Grouse   |

### Legend

- |                      |                      |
|----------------------|----------------------|
| Secondary highway    | Intermittent stream  |
| Light duty road      | Marsh/Swamp          |
| Unimproved road      | Intermediate contour |
| Reservation boundary | Index contour        |
| Building             | Water tank           |
| Stream               | Gate                 |



For recreational use only.  
Never hike alone, follow Leave no Trace principles.  
Universal Transverse Mercator, zone 18, shown in blue.  
Base maps: USGS 7.5' series quadrangles *Bushkill* (1993) & *Twelvemile Pond* (1983).  
Buildings, campsites and trails added using Global Positioning System (GPS).